

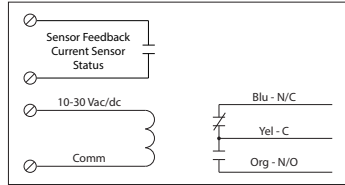
## RELAY & AC CURRENT SWITCH COMBOS

### RIBXLC SERIES

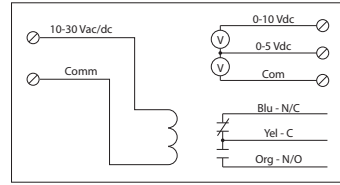
Current Switches or Transducers with Relay, 5 or 10 Amp SPDT, 10-30 Vac/dc Coil, Fixed, Adjustable, or Analog, Up to 150 Amps Sensing Range, Terminal Strip or Wire Lead Output



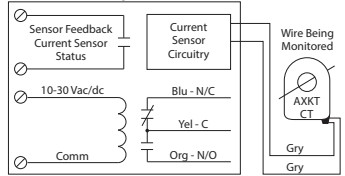
#### RIBXLCA, RIBXLCF, RIBXLCEA+



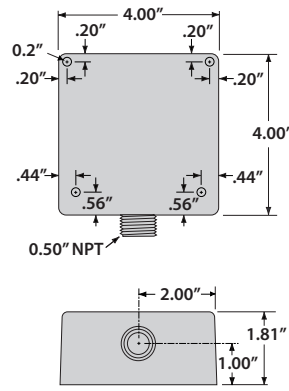
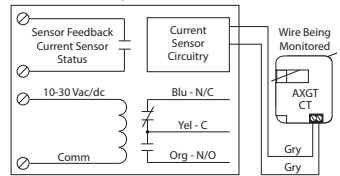
#### RIBXLCV, RIBXLCEV^



#### RIBXLCRA, RIBXLCRF+



#### RIBXLCJA, RIBXLCJF+



**Note:** Models AXKT and AXGT CT remotes do not have contact closure circuitry and only work in conjunction with RIBXLCR and RIBXLCJ models, respectively.

### SPECIFICATIONS

- # Relays & Contact Type: One (1) SPDT Continuous Duty Coil
- Expected Relay Life: 10 million cycles minimum mechanical
- Operating Temperature: -30 to 140° F
- Humidity Range: 5 to 95% (noncondensing)
- Operate Time: 20ms
- Relay Status: Red LED On = Activated
- Dimensions: 4.00"H x 4.00"W x 1.81"D with 0.50" NPT hub
- Origin: Made of US and non-US parts
- Wire Length: 16", 600V Rated
- Approvals: UL Listed, UL916, C-UL, CE, RoHS
- Housing Rating: UL Accepted for Use in Plenum, NEMA 1
- Gold Flash: Yes
- Override Switch: No

- + Sensor Contact:**
  - When current sensor status is off (open), leakage <30 uA @ 30Vac/dc
  - When current sensor status is on (closed), voltage drop <.3 Vac/dc @ .1 Amp <1.6 Vac/dc @ .4 Amp
- ^ Sensor Feedback Output:**
  - Voltage output is proportional to current sensor range.
  - Min. Input Impedance = 30K ohms
  - Accuracy +/- 3% full scale
  - Vripple < 10m Vac
- Coil Current:**
  - 33 mA @ 10 Vac
  - 35 mA @ 12 Vac
  - 46 mA @ 24 Vac
  - 55 mA @ 30 Vac
  - 13 mA @ 10 Vdc
  - 15 mA @ 12 Vdc
  - 18 mA @ 24 Vdc
  - 20 mA @ 30 Vdc
- Coil Voltage Input:**
  - 10-30 Vac/dc ; 50-60 Hz
  - Drop Out = 2.1 Vac / 2.8 Vdc
  - Pull In = 9 Vac / 10 Vdc

### RIBXLC SERIES SELECTION GUIDE

Model#	Sensing Range	Type *	Threshold	Sensor Output	Remote Style	Resistive	Contact Ratings
RIBXLCF	.50-10 Amps	Internal w/ contact status	Fixed, .50 Amp	Solid State Contact 30 Vac/dc, 0.4 Amp		10 Amp	10 Amp Resistive @ 120-277 Vac 10 Amp Resistive @ 28 Vdc 480 VA Pilot Duty @ 240-277 Vac 480 VA Ballast @ 277 Vac Not rated for Electronic Ballast
RIBXLCA	.50-10 Amps	Internal w/ contact status	Adjustable	Solid State Contact 30 Vac/dc, 0.4 Amp		10 Amp	600 Watt Tungsten @ 120 Vac (N/O) 240 Watt Tungsten @ 120 Vac (N/C) 1/3 HP @ 120-240 Vac (N/O) 1/6 HP @ 120-240 Vac (N/C) 1/4 HP @ 277 Vac (N/O) 1/8 HP @ 277 Vac (N/C)
RIBXLCV	0-10 Amps	Internal w/ voltage output	Analog	0-5 Vdc 0-10 Vdc		10 Amp	
RIBXLCRF	1.25-150 Amps	External w/ contact status	Fixed, 1.25 Amp	Solid State Contact 30 Vac/dc, 0.4 Amp	Model AXKT; Solid Core Remote CT	10 Amp	
RIBXLCRA	1.25-150 Amps	External w/ contact status	Adjustable	Solid State Contact 30 Vac/dc, 0.4 Amp	Model AXKT; Solid Core Remote CT	10 Amp	
RIBXLCJF	3-150 Amps	External w/ contact status	Fixed, 3 Amp	Solid State Contact 30 Vac/dc, 0.4 Amp	Model AXGT; Split Core Remote CT	10 Amp	
RIBXLCJA	3-150 Amps	External w/ contact status	Adjustable	Solid State Contact 30 Vac/dc, 0.4 Amp	Model AXGT; Split Core Remote CT	10 Amp	
RIBXLCEA	.125-5 Amps	Internal w/ contact status	Adjustable	Solid State Contact 30 Vac/dc, 0.4 Amp		5 Amp	5 Amp Resistive @ 277 Vac 345 VA Pilot Duty @ 120/240 Vac (N/O) 268 VA Pilot Duty @ 277 Vac (N/O) 211 VA Pilot Duty @ 120/240 Vac (N/C) 175 VA Pilot Duty @ 277 Vac (N/C) 1/3 HP @ 120-240 Vac (N/O) 1/6 HP @ 120-240 Vac (N/C) 1/4 HP @ 277 Vac (N/O) 1/8 HP @ 277 Vac (N/C)
RIBXLCEV	0-5 Amps	Internal w/ voltage output	Analog	0-5 Vdc 0-10 Vdc		5 Amp	

\* = Internal current sensor monitors current through common contact of relay

ECMs = FDI Certified for use with electronically commutated motors