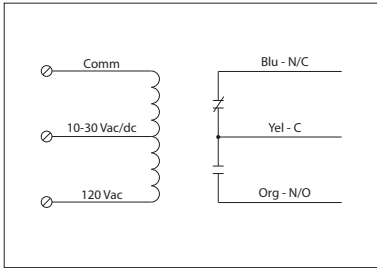


## 10 AMP PILOT CONTROL RELAYS

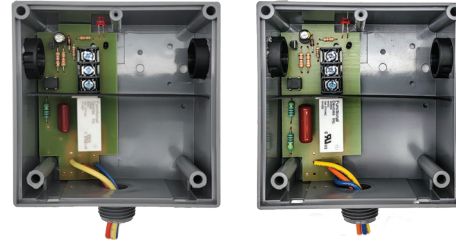
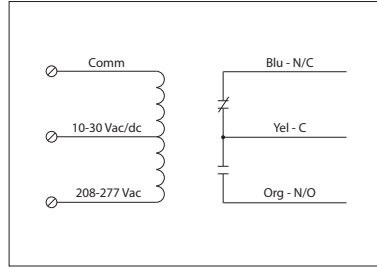
### RIBTU1C

Pilot Relay, 10 Amp SPDT, 10-30 Vac/dc/  
 120 Vac Coil, Hi/Lo Voltage Separation,  
 NEMA 1 Housing



### RIBTH1C

Pilot Relay, 10 Amp SPDT, 10-30 Vac/dc/  
 208-277 Vac Coil, Hi/Lo Voltage Separation,  
 NEMA 1 Housing



## SPECIFICATIONS

- # Relays & Contact Type: One (1) SPDT Continuous Duty Coil
- Expected Relay Life: 10 million cycles minimum mechanical
- Operating Temperature: -30 to 140° F
- Humidity Range: 5 to 95% (noncondensing)
- Operate Time: 20ms
- Relay Status: LED On = Activated
- Dimensions: 4.00"H x 4.00"W x 1.81"D with 0.50" NPT nipple
- Housing Detail: See **Housing C** in housing guide for dimensions
  - Origin: Made of US and non-US parts
  - Wires: 16", 600V Rated
- Approvals: UL Listed, UL916, C-UL, CE, RoHS  
 UL864, California State Fire Marshal
- Housing Rating: UL Accepted for Use in Plenum, NEMA 1
- Gold Flash: Yes
- Override Switch: No

- Contact Ratings:
  - 10 Amp Resistive @ 277 Vac
  - 10 Amp Resistive @ 28 Vdc
  - 480 VA Pilot Duty @ 240-277 Vac
  - 480 VA Ballast @ 277 Vac
  - Not rated for Electronic Ballast
  - 600 Watt Tungsten @ 120 Vac (N/O)
  - 240 Watt Tungsten @ 120 Vac (N/C)
  - 1/3 HP @ 120-240 Vac (N/O)
  - 1/6 HP @ 120-240 Vac (N/C)
  - 1/4 HP @ 277 Vac (N/O)
  - 1/8 HP @ 277 Vac (N/C)

- Coil Current:
 

33 mA @ 10 Vac	13 mA @ 10 Vdc
35 mA @ 12 Vac	15 mA @ 12 Vdc
46 mA @ 24 Vac	18 mA @ 24 Vdc
55 mA @ 30 Vac	20 mA @ 30 Vdc
28 mA @ 120 Vac (RIBTU1C)	
39 mA @ 208-277 Vac (RIBTH1C)	

- Coil Voltage Input:
  - 10-30 Vac/dc ; 120 Vac ; 50-60 Hz (RIBTU1C)
  - 10-30 Vac/dc ; 208-277 Vac ; 50-60 Hz (RIBTH1C)
  - Drop Out = 2.1 Vac / 2.8 Vdc
  - Pull In = 9 Vac / 10 Vdc