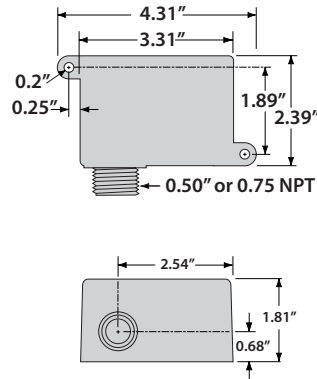
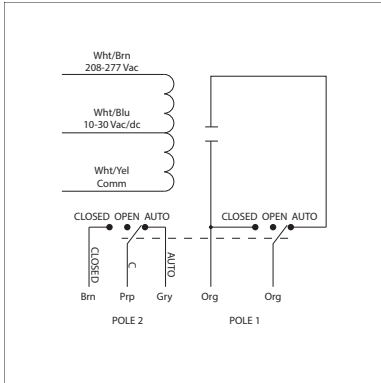


10 AMP PILOT CONTROL RELAY

RIBH1SM-250

Pilot Relay, 10 Amp SPST-N/O + Override + Monitor, 10-30 Vac/dc/208-277 Vac Coil, NEMA 1 Housing



SPECIFICATIONS

Relays & Contact Type: One (1) SPST Continuous Duty Coil
Expected Relay Life: 10 million cycles minimum mechanical
Operating Temperature: -30 to 140° F
Humidity Range: 5 to 95% (noncondensing)
Operate Time: 20ms
Relay Status: LED On = Activated
Dimensions: 2.39"H x 3.31"W x 1.81"D with 0.50" NPT hub
Origin: Made of US and non-US parts
Wires: 16", 600V Rated
Approvals: UL Listed, UL916, C-UL, CE, RoHS UL
Housing Rating: Accepted for Use in Plenum, NEMA 1
Gold Flash: Yes
Override Switch: Yes + Monitor

Contact Ratings:
10 Amp Resistive @ 120/250 Vac
345 VA Pilot Duty @ 120/240 Vac
211 VA Pilot Duty @ 120/240 Vac
1/3 HP @ 120-240 Vac (N/O)
1/6 HP @ 120-240 Vac (N/C)

Coil Voltage Input:
10-30 Vac/dc ; 208-277 Vac ; 50-60 Hz
Drop Out = 2.1 Vac / 2.8 Vdc
Pull In = 9 Vac / 10 Vdc

Coil Current:
55 mA @ 30 Vac
39 mA @ 208-277 Vac
20 mA @ 30 Vdc

Notes:

Second pole of override switch can be connected to digital-in of controller to report position of override switch

Rating of second pole is 250 Vac max and 5 Amp max

Order Normally Closed by adding "-NC" to end of model number